



## Unit: 4.7

# Effective Searching

### Key Learning

- To locate information on the search results page.
- To use search effectively to find out information.
- To assess whether an information source is true and reliable.

### Key Resources



2Publish Plus



### Key Questions

#### What is a search engine?

A search engine is a piece of software that allows the user to find and display pages from the World Wide Web.

### Key Vocabulary

#### Easter egg

An unexpected or undocumented feature in a piece of computer software or on a DVD, included as a joke or a bonus.

#### Internet

A global computer network providing a variety of information and communication facilities.

#### Internet browser

A software application used to locate and display Web pages.

#### Search

To look for information. In this case on the Internet.

#### Search engine

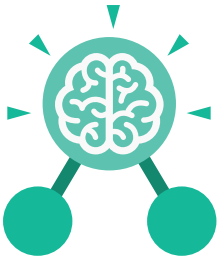
A program that searches for and identifies items in a database. Used especially for finding sites on the World Wide Web.

#### Spoof website

Website spoofing is the act of creating a website, as a hoax, with the intention of misleading readers that the website has been created by a different person or organisation.

#### Website

A set of related web pages located under a single domain name.



## Unit: 4.8

# Hardware Investigators

### Key Learning

- To understand the different parts that make up a computer.
- To recall the different parts that make up a computer.

### Key Resources

**purple  
mash**



2Connect



2Quiz

### Key Questions

#### What is the difference between hardware and software?

Hardware refers to the physical parts of a computer or device. The parts inside the computer casing are often called the components. The parts that are attached to the computer case are called peripherals. Software describes the programs that run on the computer.

### Key Vocabulary

#### Motherboard

A printed circuit board containing the main parts of a computer or other device, with connectors for other circuit boards to be slotted into.

#### CPU

The part of a computer in which operations are controlled.

#### RAM

Allows programs to store information to help the computer run more quickly.

#### Graphics card

A printed circuit board that controls the output to a display screen.

#### Network card

An electronic device that connects a computer to a computer network.

#### Monitor

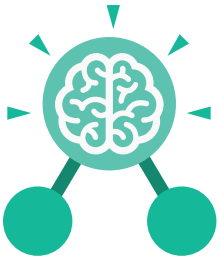
A screen which displays an image generated by a computer.

#### Speakers

A device for letting you hear sounds generated by the computer.

#### Keyboard and mouse

External input devices.



## Unit: 4.8

# Hardware Investigators

### Key Images



Motherboard



CPU



RAM



Graphics card



Network card



Monitor



Speakers



Keyboard



Mouse